



Internet

Hawaiian Shell News

An Educational publication of the
Hawaiian Malacological Society

Feature 6D IHSN Shell Book Part 35

This will be part of a book of Thorsson's photos of Molluscs in his files under a main folder, Molluscs. Chapters in this Feature will be by family names used in Thorsson's files. When converted to a CD book, they will be placed in taxonomic order indicated in Hawaiian Marine Shells by E. A. Kay (1979) or in A Classification of the Living Mollusca, Vaught, 1989.

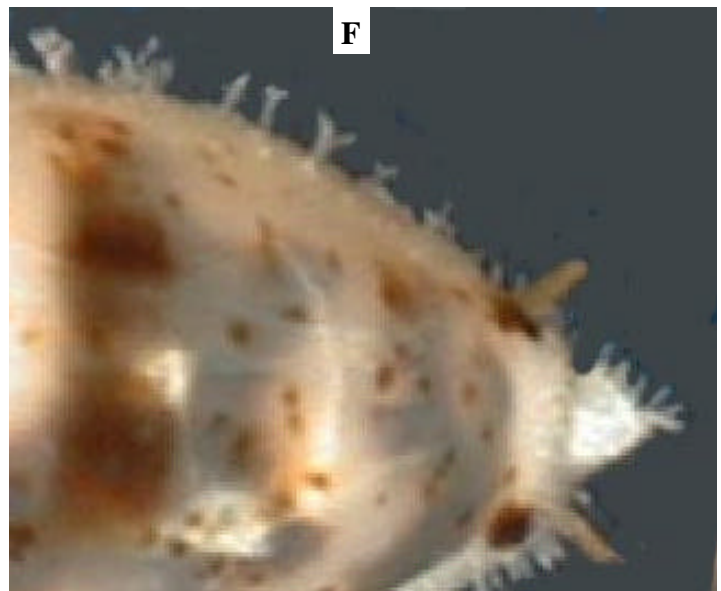
Some of my files were named by other than family names such as Berthault photos. When I put them in Feature 6 they will be on pages by the correct family names.

Family names alone do not reflect their correct placement in taxonomic order.

The length of IHSN sections are regulated to result in an Acrobat version that is about 1 megabyte in size which can be downloaded by computers with moderately fast access to the Internet..

This part continues Family Cypraeidae.

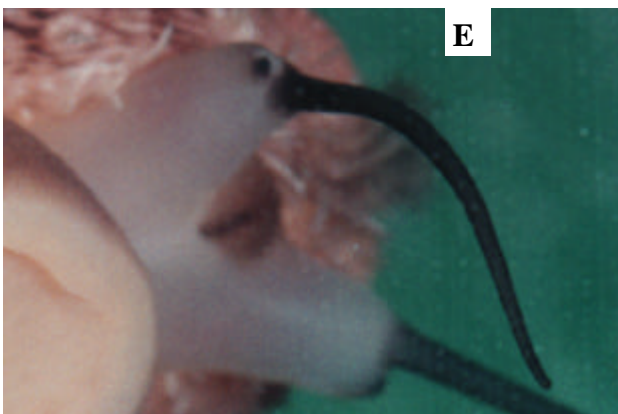
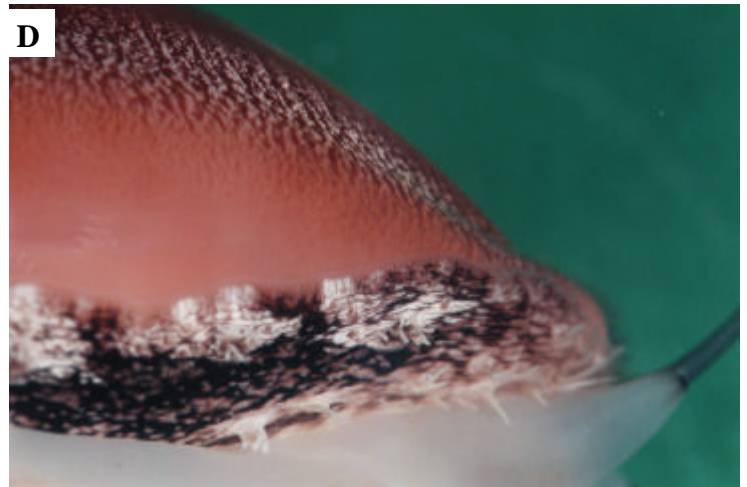
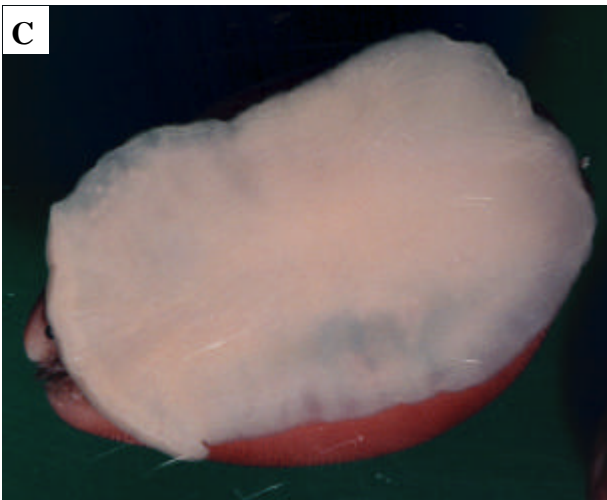
Cypraeidae Cypraea



Cypraeidae *Cypraea Kieneri* Hidalgo, 1906

Photos by Barclay.

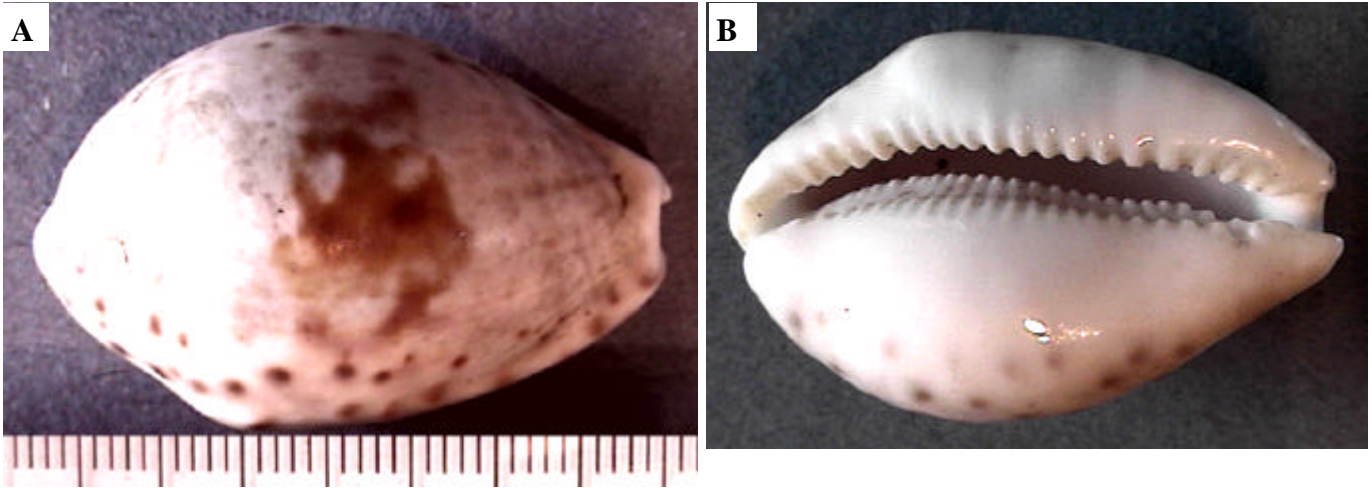
Cypraeidae Cypraea



Cypraeidae *Cypraea kuroharai* Habe 1961

Specimen 331-37 from Oahu, Hawaii.

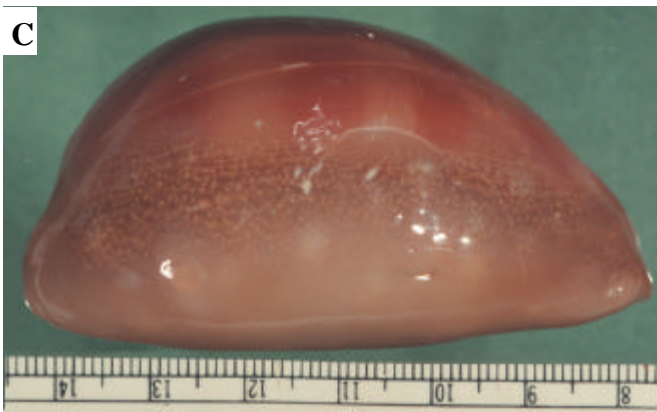
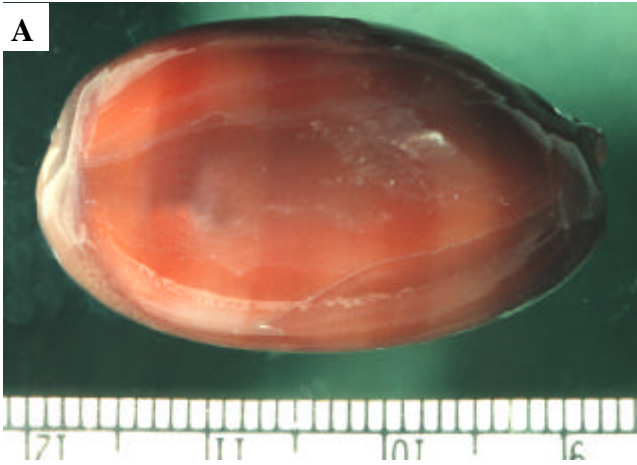
Cypraeidae Cypraea



***Cypraeidae Cypraea latior* Melvill, 1888**

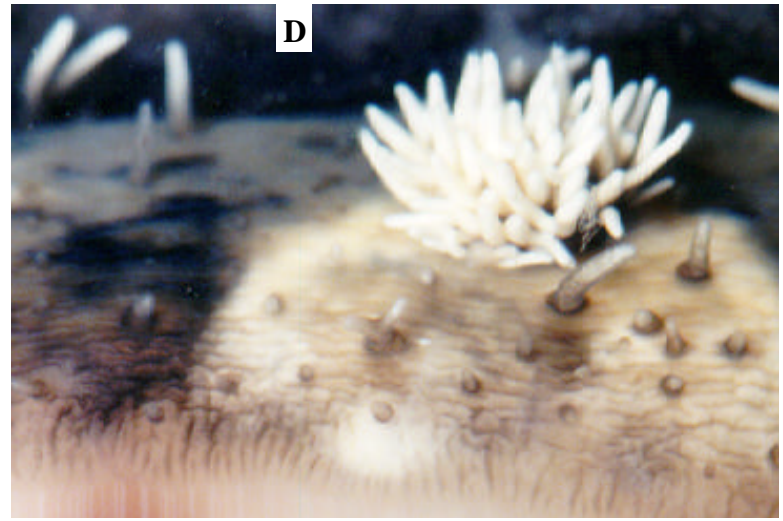
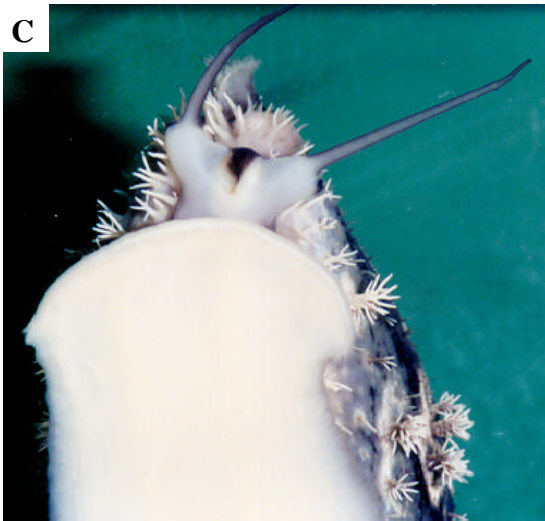
Unnumbered specimen. Burgess 1985 considered this a synonym of *Cypraea rashleighana* Melvill, 1888.

Cypraeidae Cypraea



Cypraeidae *Cypraea leviathan* Schilder & Schilder, 1937

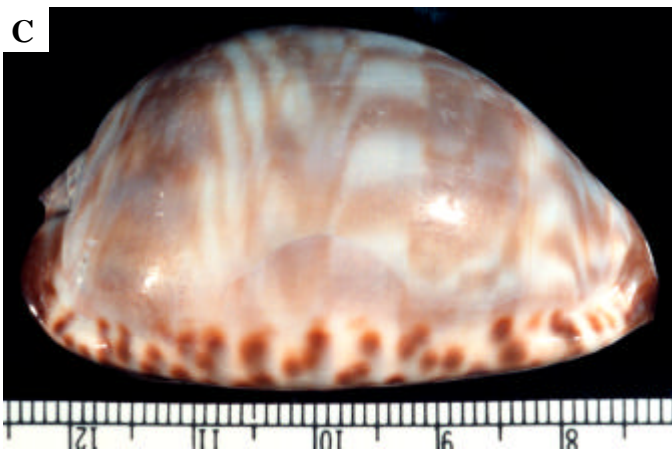
Cypraeidae Cypraea



Cypraeaeidae *Cypraea lynx* Linnaeus, 1758

Specimen M37-07 from Majuro.

Cypraeidae Cypraea



Cypraeaeidae *Cypraea maculifera* Schilder, 1932

Figs. A, B, and D to F are Specimen G61-04 from Guam. Fig. C is a juvenile specimen 93-31 from Oahu, Hawaii.