



Internet

Hawaiian Shell News

An Educational publication of the
Hawaiian Malacological Society

Feature 6K IHSN Shell Book Part 42

This will be part of a book of Thorsson's photos of Molluscs in his files under a main folder, Molluscs. Chapters in this Feature will be by family names used in Thorsson's files. When converted to a CD book, they will be placed in taxonomic order indicated in Hawaiian Marine Shells by E. A. Kay (1979) or in A Classification of the Living Mollusca, Vaught, 1989.

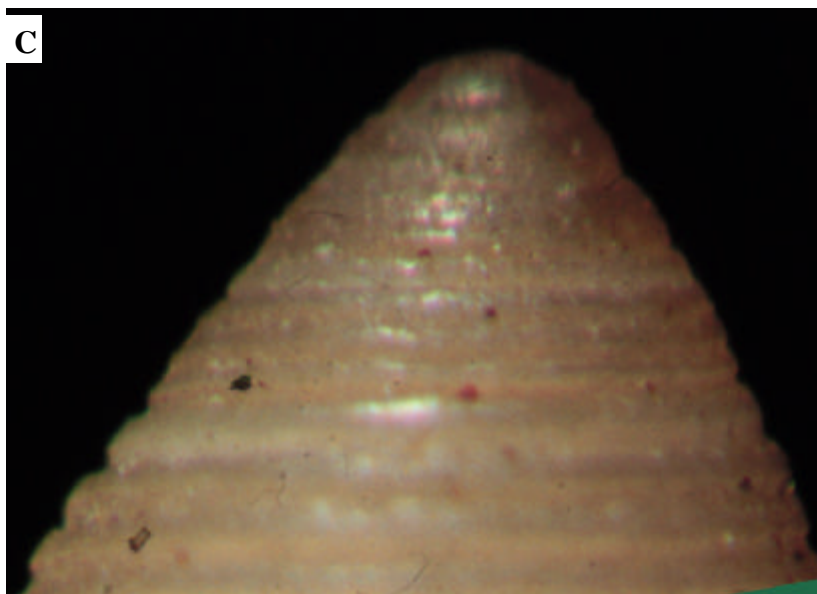
Some of my files were named by other than family names such as Berthault photos. When I put them in Feature 6 they will be on pages by the correct family names.

Family names alone do not reflect their correct placement in taxonomic order.

The length of IHSN sections are regulated to result in an Acrobat version that is about 1 megabyte in size which can be downloaded by computers with moderately fast access to the Internet..

This part continues Family Cypraeidae.

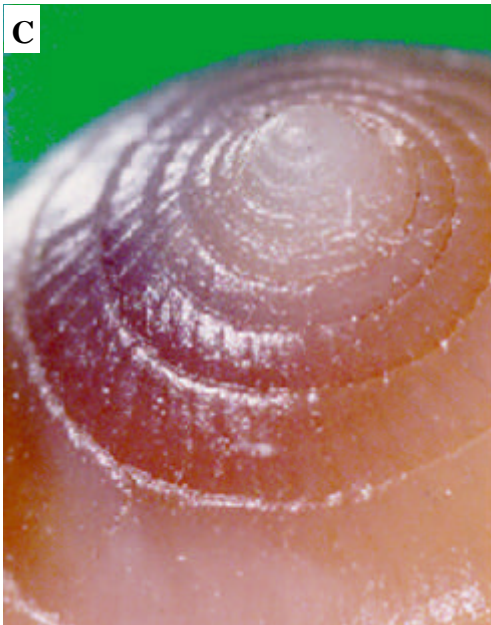
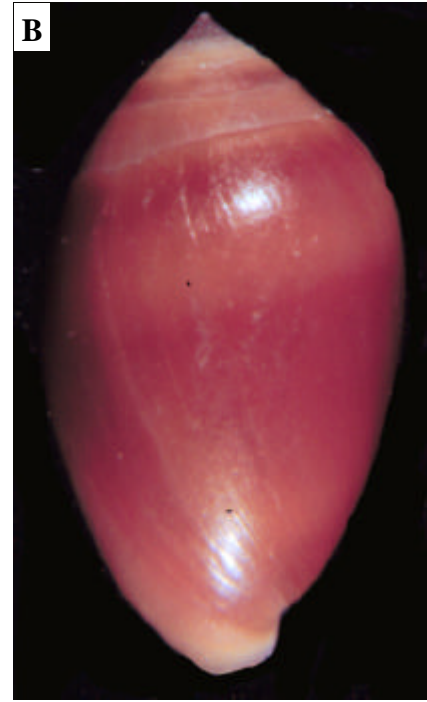
Elobidae



Elobidae *Laemodonta monliferum*

Figs. A to D are 5.8 x 3.6mm specimens from Oahu, Hawaii

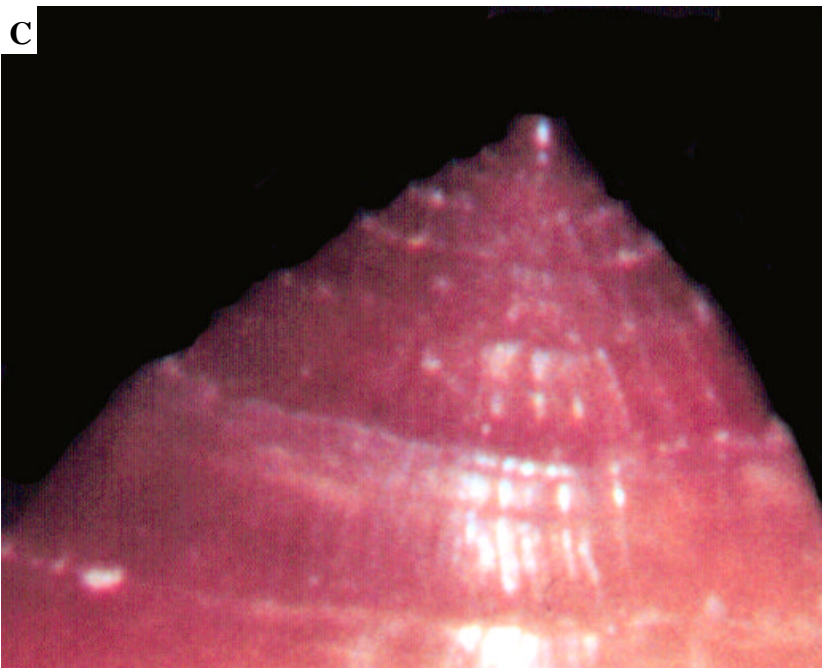
Elbolidae



Elbolidae: *Melampus castaneus*

Figs. A to D are 9.9 x 3 mm specimen CH07 from Oahu, Hawaii.

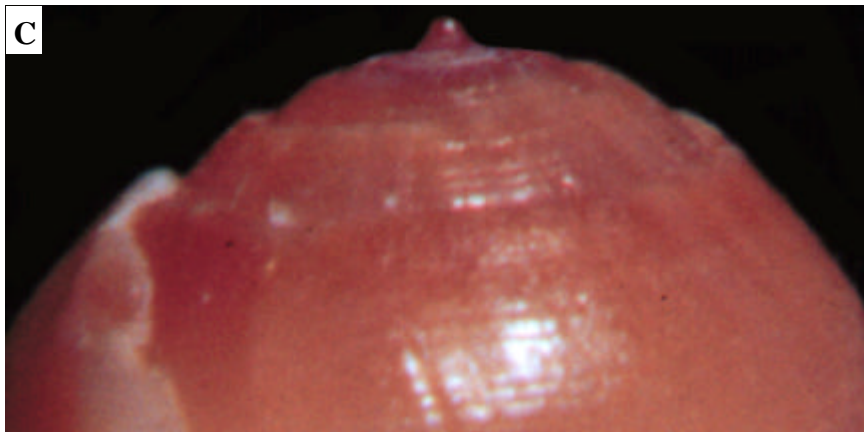
Elbolidae



Elbolidae: *Melampus fasciata*

Figs. A to D are a 8.5 x 5 mm specimen from Oahu, Hawaii

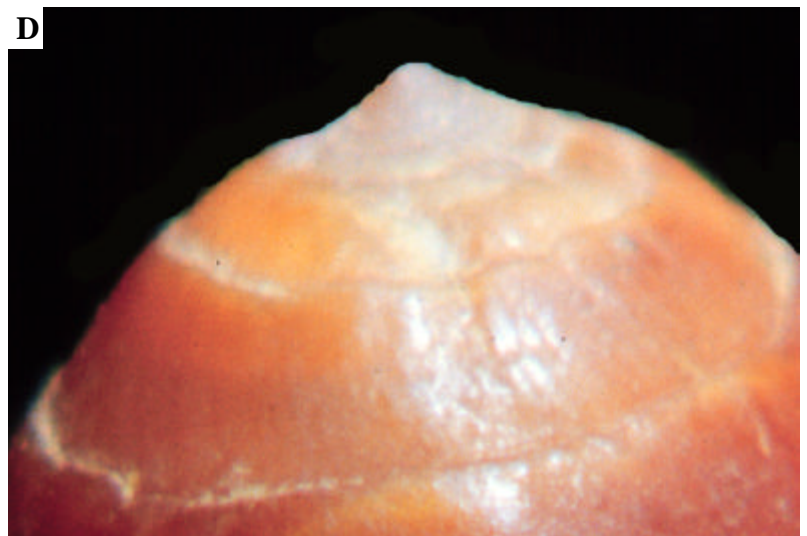
Elbolidae



Elbolidae: *Melampus species A*

Figs. A to F is a 7.5 x 4.6 mm specimen from Oahu, Hawaii

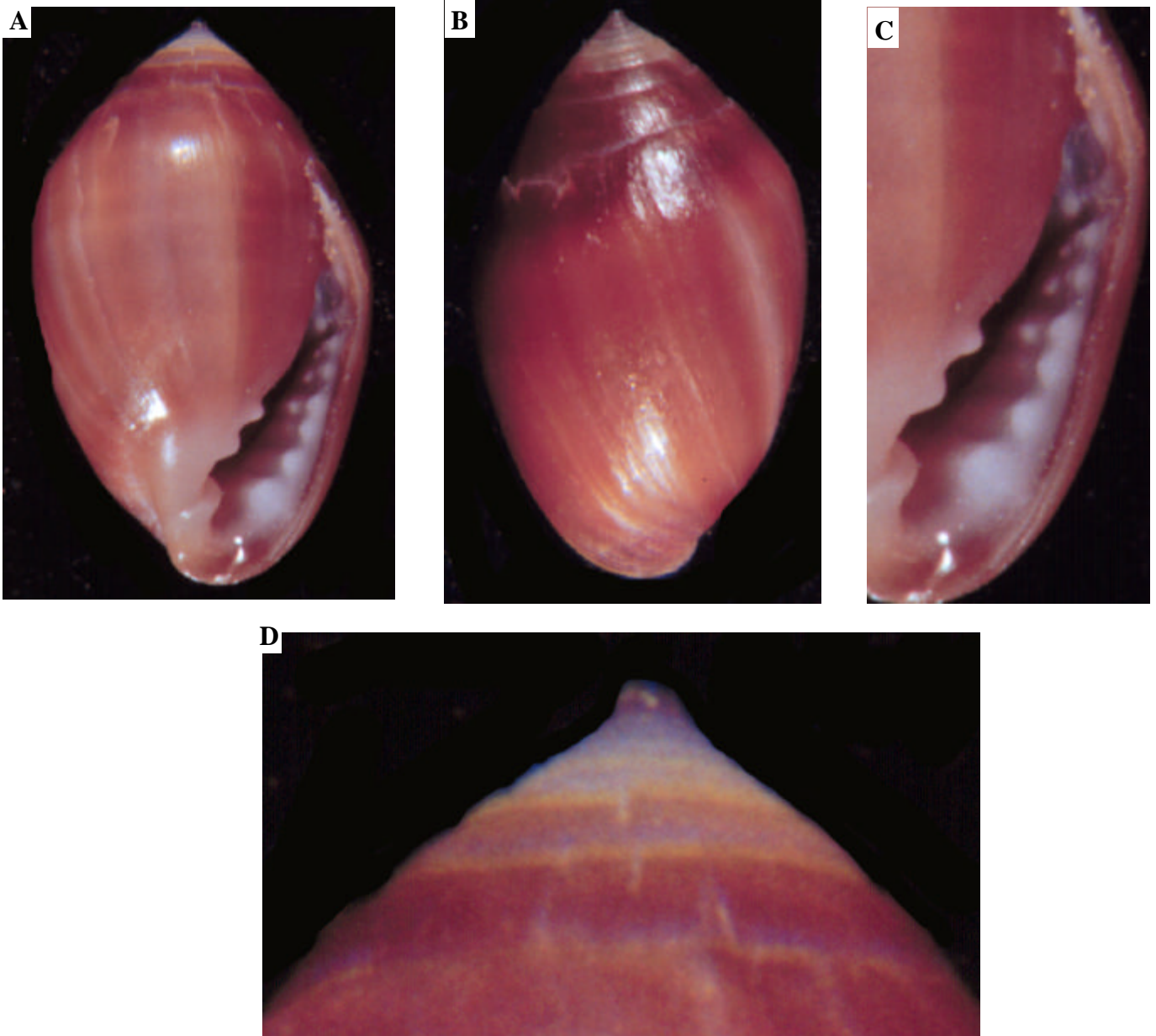
Elbolidae



Elbolidae: *Melampus species B*

Figs. A to F

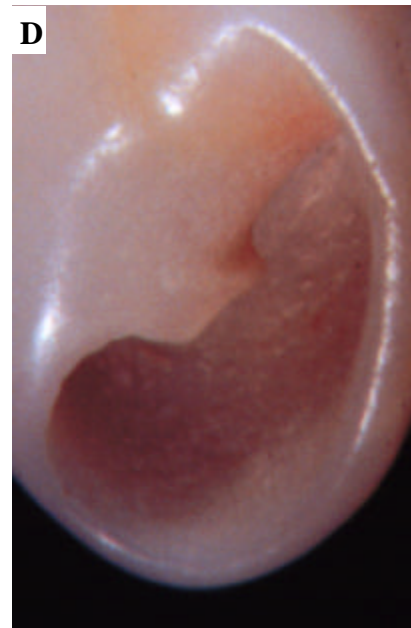
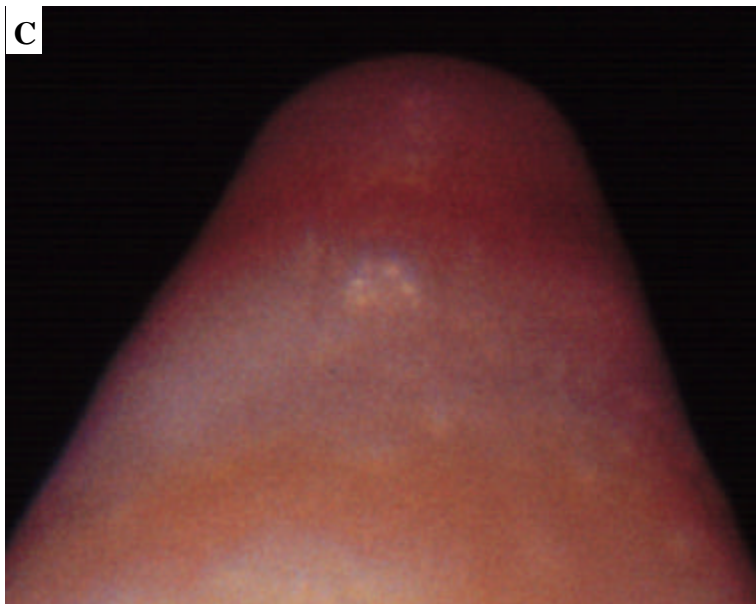
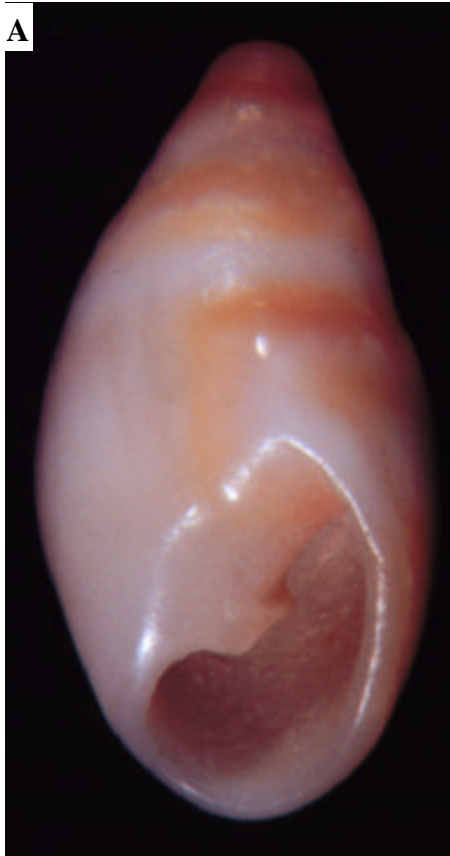
Cypraeidae Cypraea



Elbolidae: *Melampus Tabogensis*

Figs. A to F is an 5.2 x 5 mm specimen CH080.

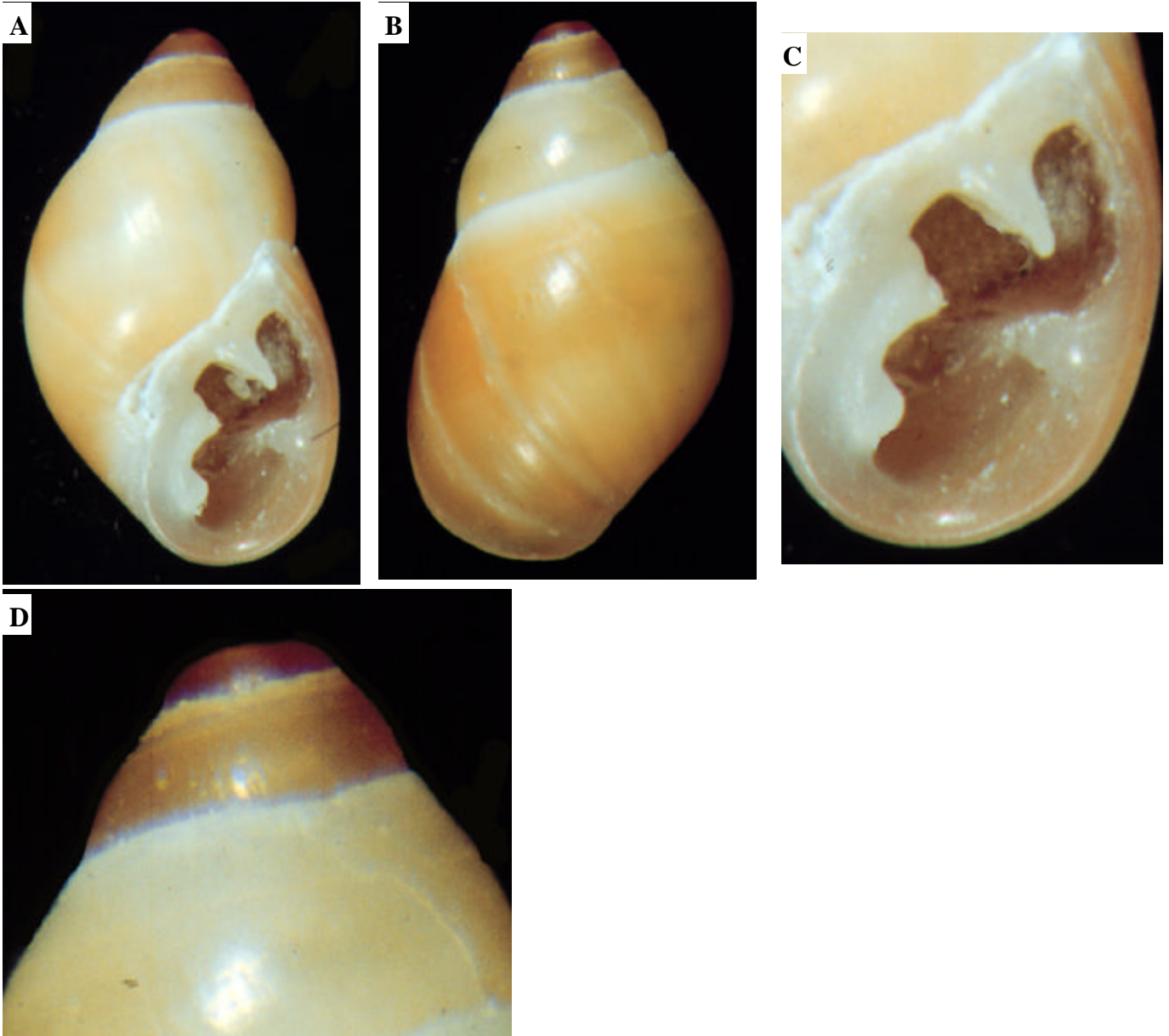
Elbolidae



Elbolidae: *Ovatella* species

Figs. A to D are Specimen CH080 11 x 5.5mm.

Elbolidae



Ellobiidae: *Peplipes affinis*

Figs. A to F is specimen CH086 6 x 3.6 mm from Oahu, Hawaii

Elbolidae

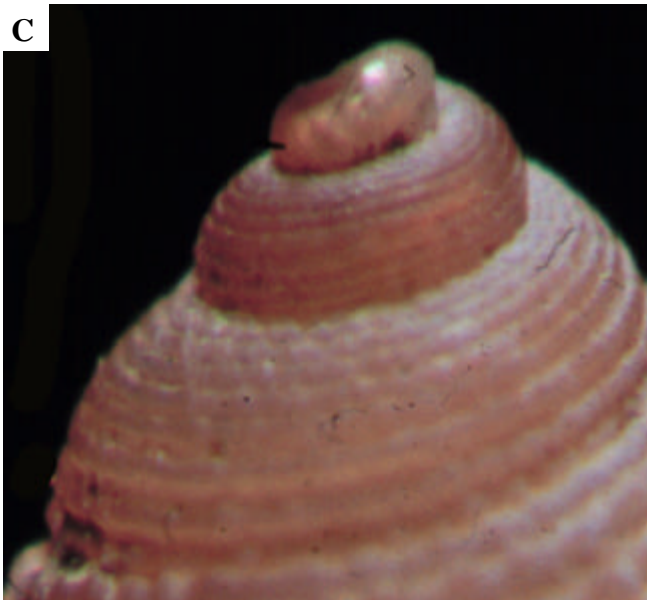
A



B



C



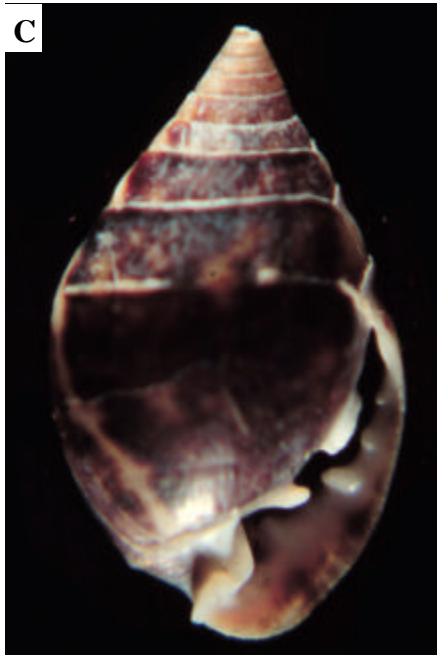
D



Ellobiidae: *Pepdipes angulatus*

Specimen CH085 5 x 3.4 mm.

Cypraeidae Cypraea



Ellobiidae: Figs. A & B *Pythia castaneus* Figs C & D *Pythia pollex*
Figs. A & B are 10 x 5.6 mm. Figs. C & D are 12 x 7 mm.