

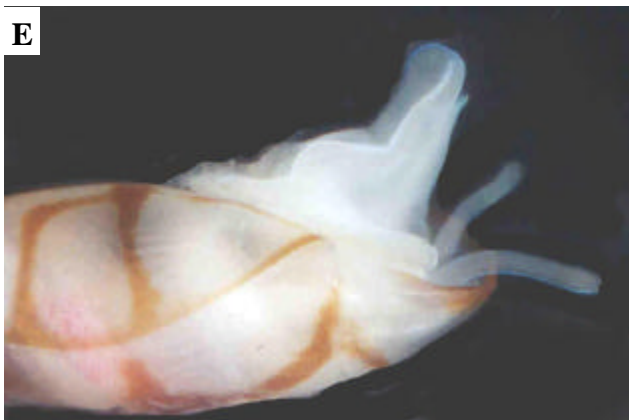
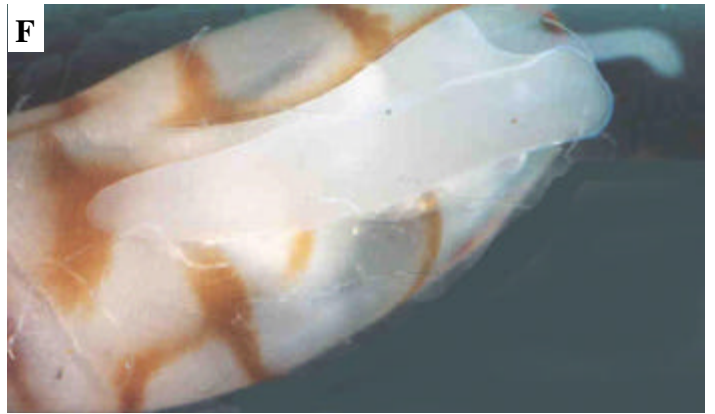
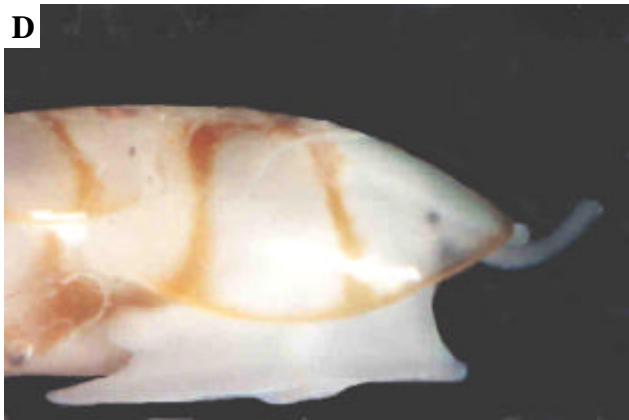


Internet
Hawaiian Shell News
An Educational publication of the
Hawaiian Malacological Society

January, 2011 Feature 6

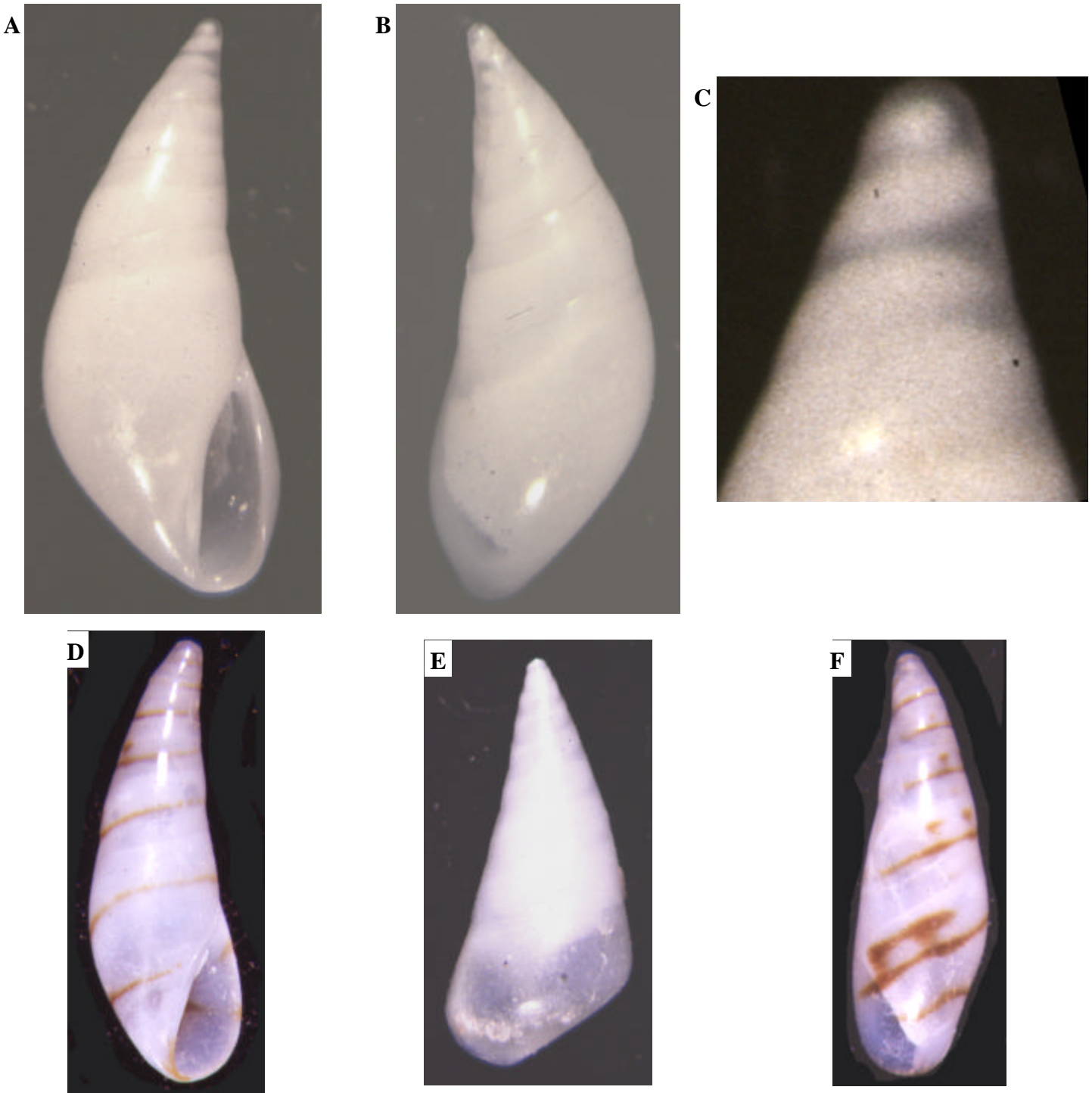


Eulimidae



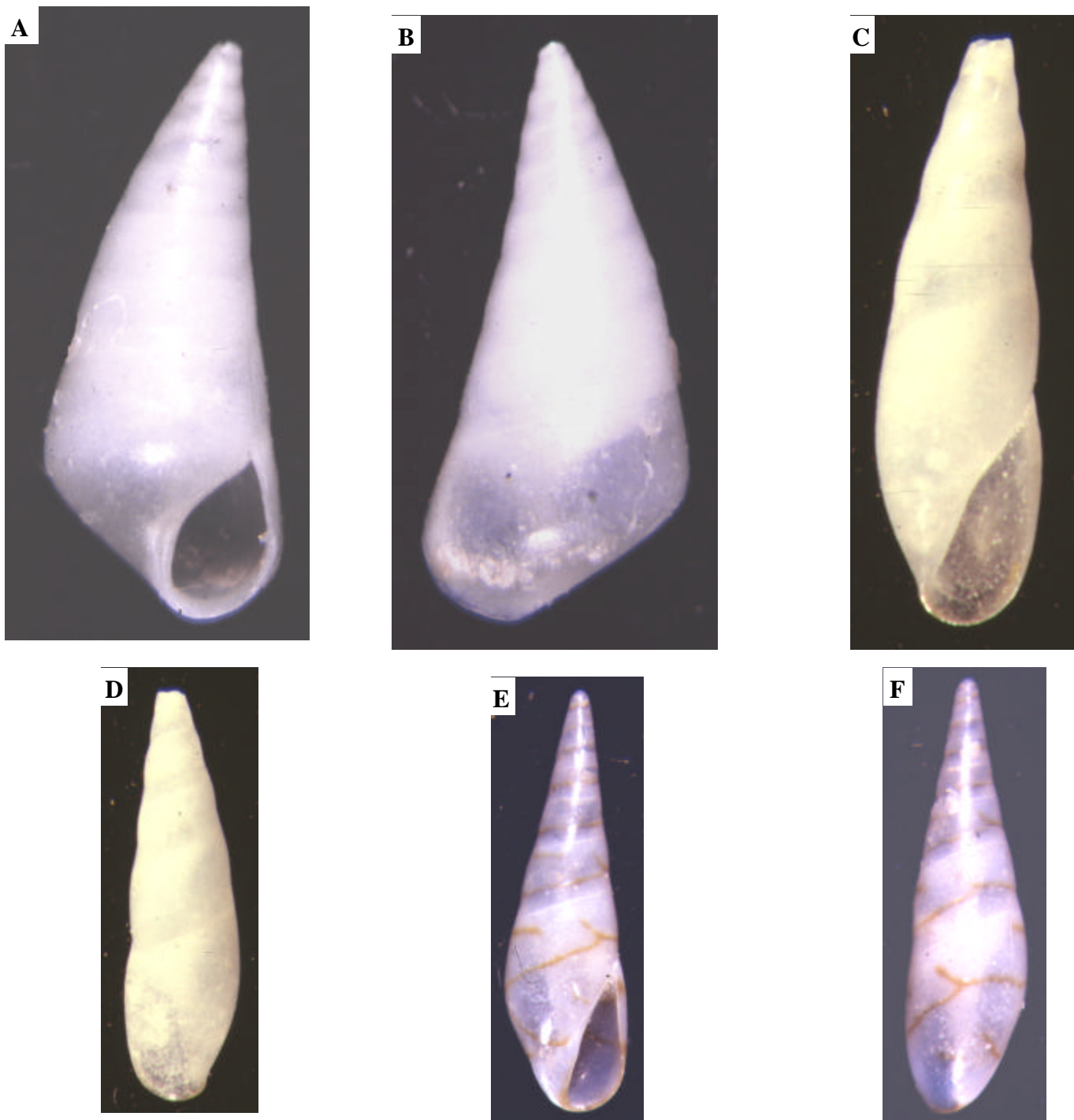
**Eulimidae: *Eulima metcalfei*
Specimen 606-13 from Oahu.**

Eulimidae



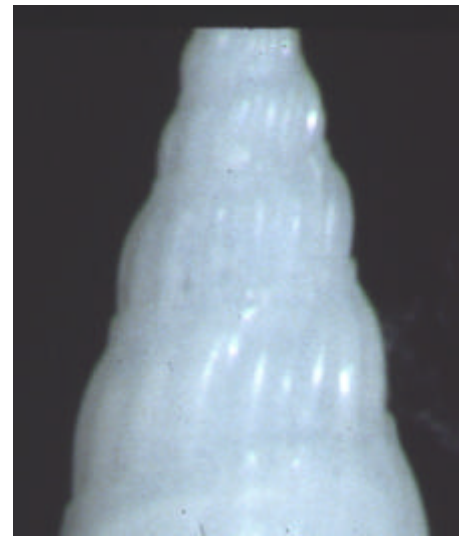
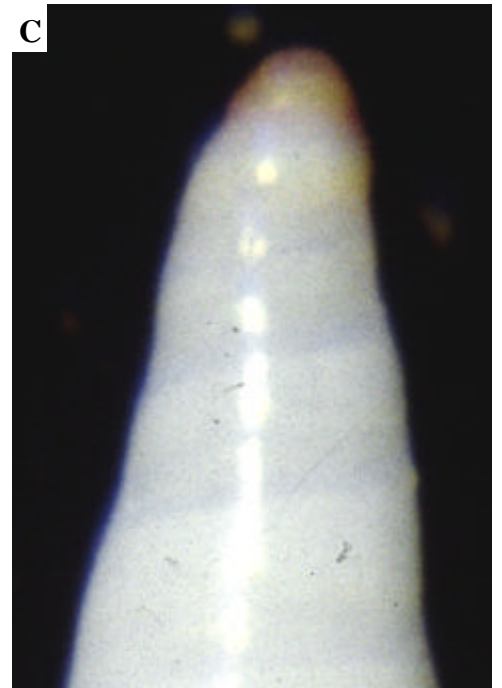
Figs. A to C are 4mm *Eulima acuta* from Oahu. Figs. D to E are 5.6 mm *Eulima distorta*.

Eulimidae



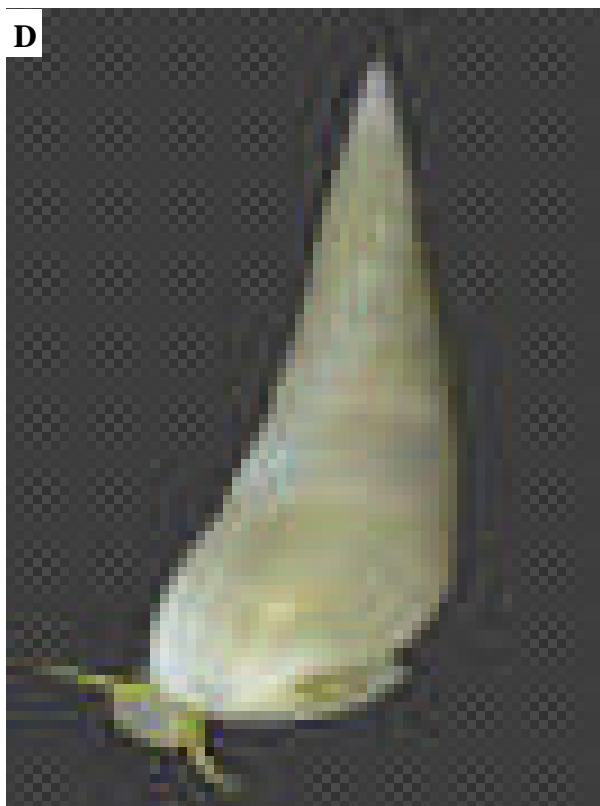
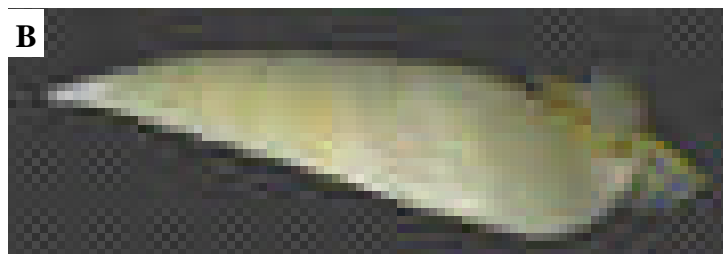
Figs. A & B are 4.2 mm *Eulima gemona*. Figs. C & D are 4.8mm *Eulima jushana*. Figs. E & F are 6.7 mm *Eulima lacca*.

Eulimidae



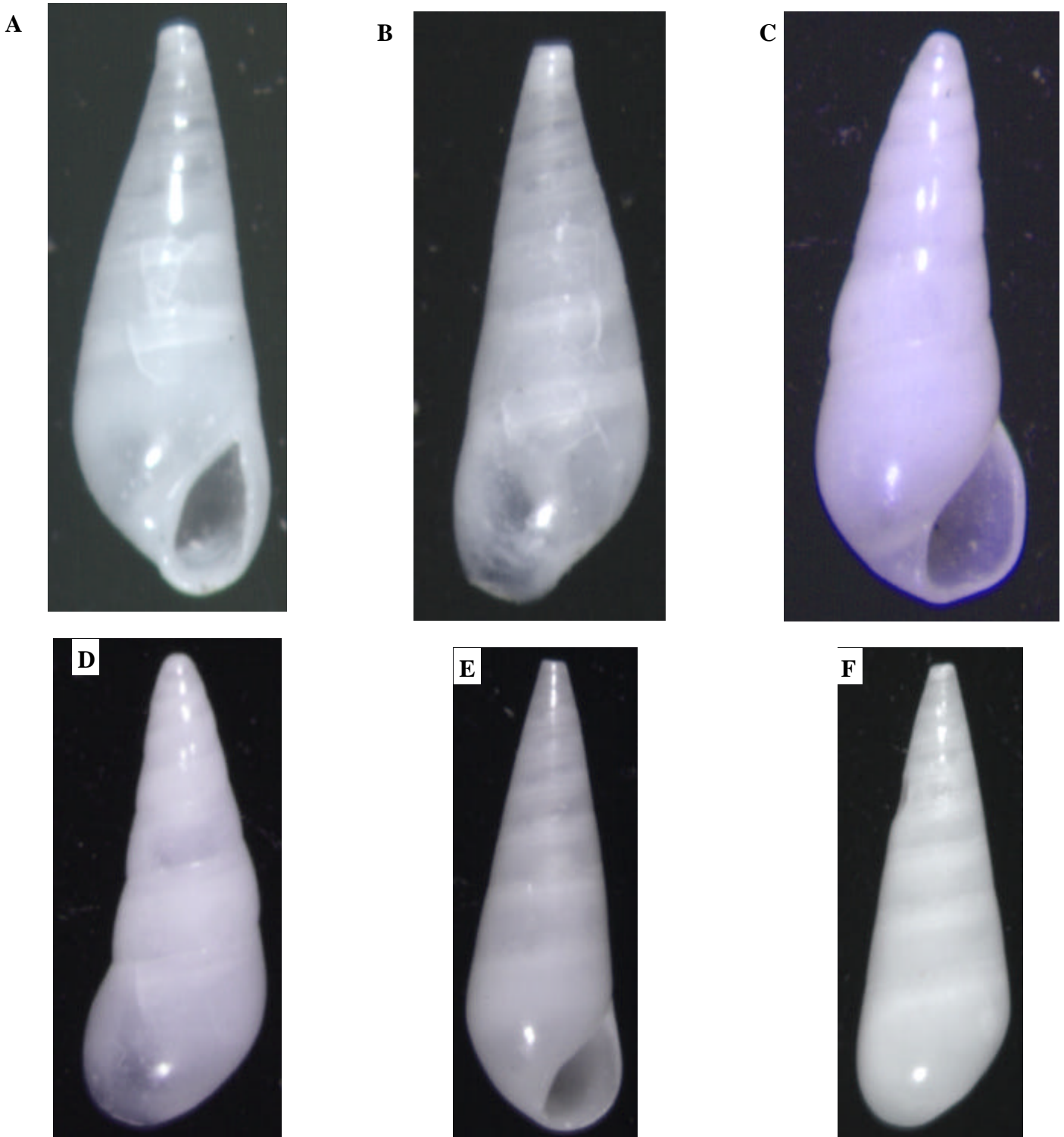
Figs. A to C are *Eulima schoutanica*. Figs D to F are 8.3 mm *Eulima supracostata*. Both are from Oahu.

Eulimidae



Figs. A to D ate an unidentified Eulima species.

Eulimidae



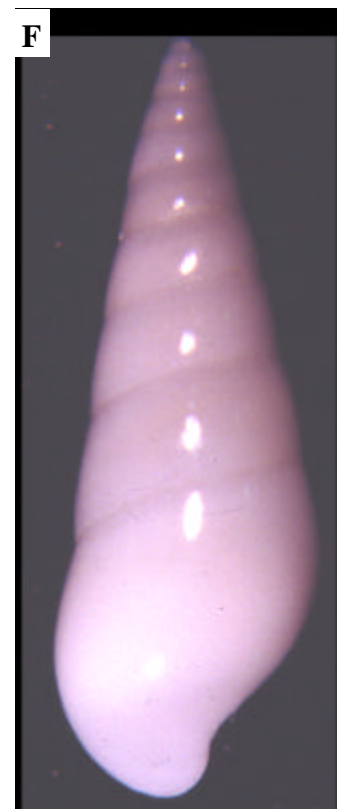
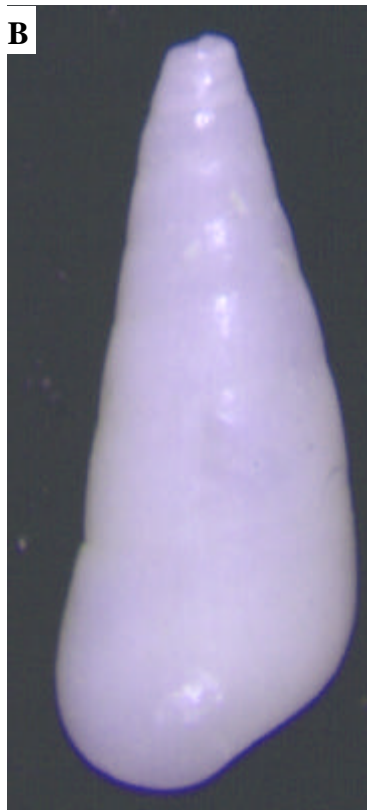
Figs. A & B are 3.3mm aciculata from Oahu. Figs. C & D are 3.3 mm Malanella aciculata. Figs. E & F are 6 mm Malanella hyalina.

Eulimidae

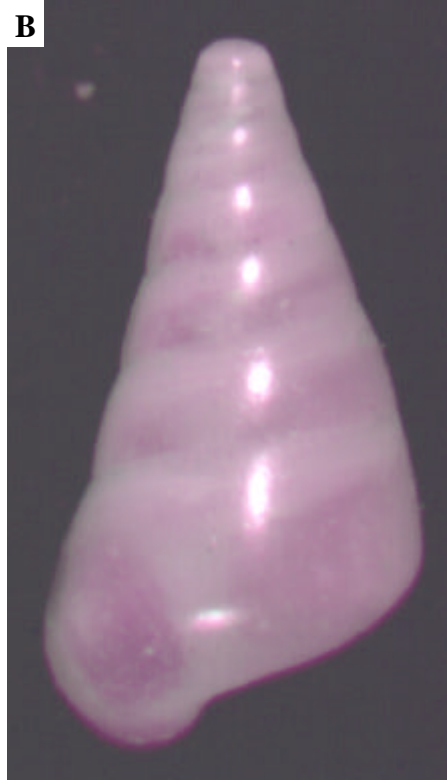


Figs. A & B are 5.8 mm *Malanella inflexa*. Figs. C & D are 1.6 mm *Malanella lentiginosa*. Figs. E & F are 5.2 mm *Malanella linearis*.

Eulimidae



Eulimidae



Figs. A & B are *Melanella stylferoides* Figs. C & D are *Melanella subacutangulus*. Figs. E & F are *Melanella thaanumi*.