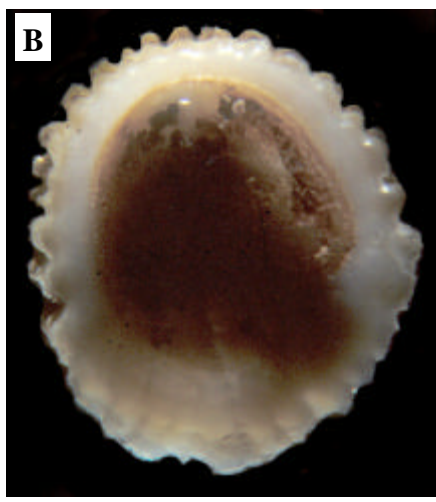




Internet  
Hawaiian Shell News  
An Educational publication of the  
Hawaiian Malacological Society

**February, 2011 Feature 6J**

Hipponicidae

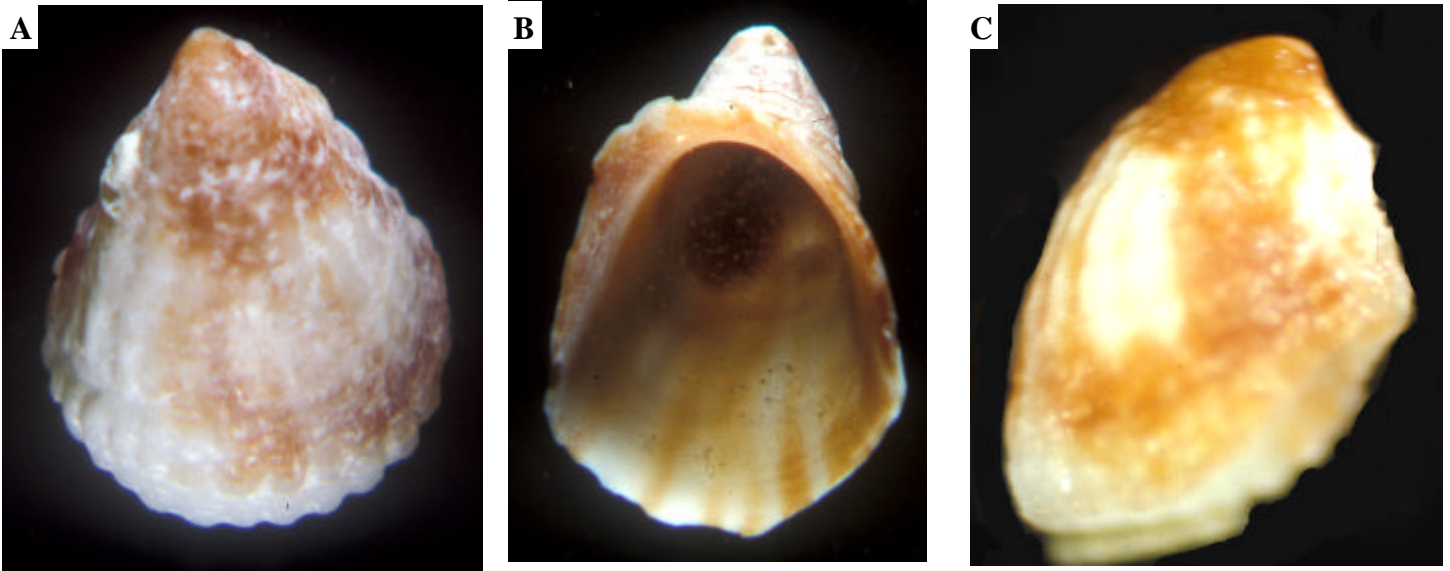


**Hipponicide: *Hipponix acuta* CH359 from Oahu**

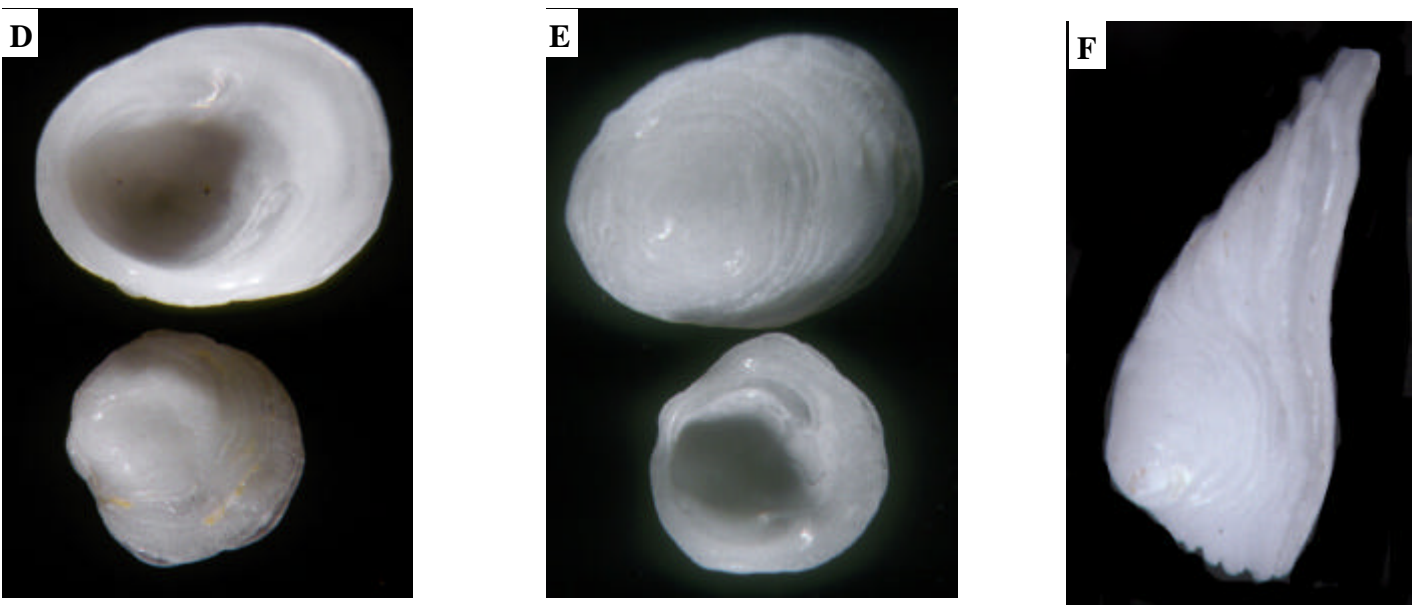


**Hipponicidae: *Hipponix antiquata* CH354 from Oahu**

Hipponicidae

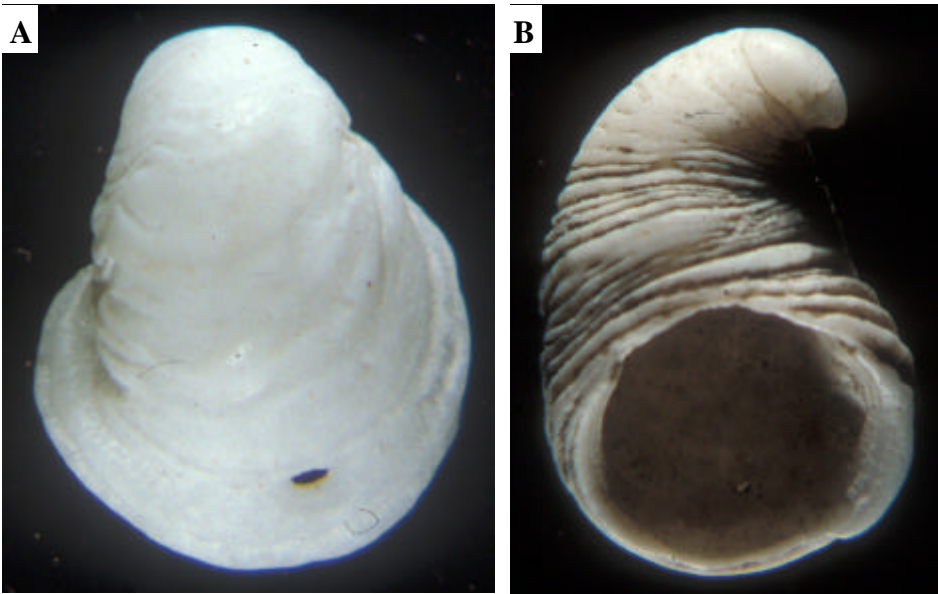


**Hipponicidae: *Hipponix conica* CH356 7.5 mm from Oahu.**

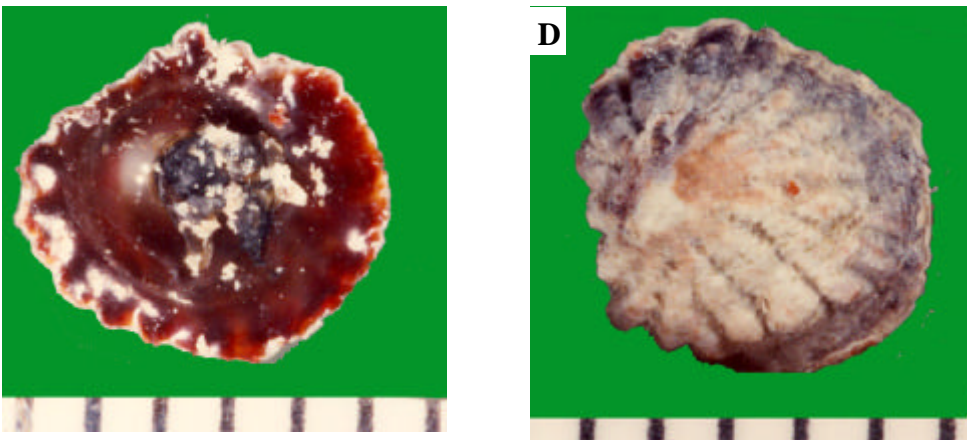


**Hipponicidae: *Hipponix foliacea* CH361 from Oahu**

Hipponicidae

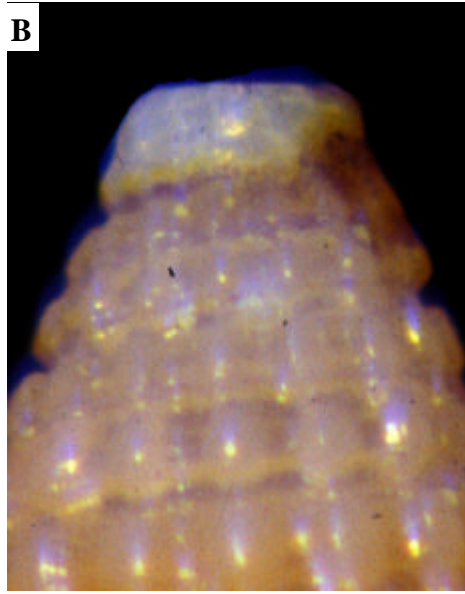


**Hipponicidae: *Hipponix otohimeae* 689 mm from Oahu.**

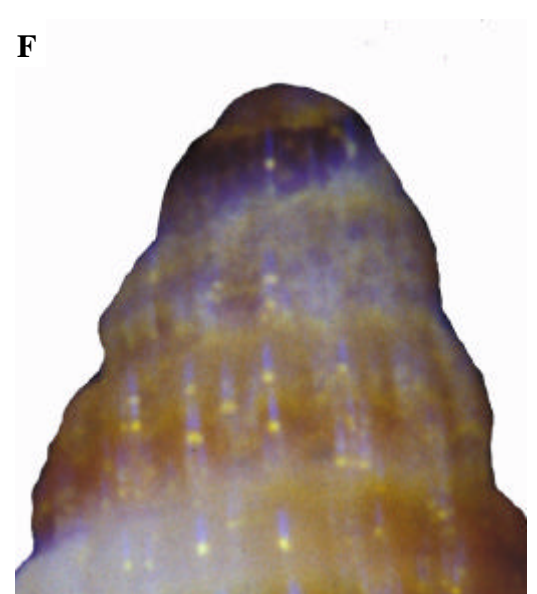


**Hipponicidae: *Hipponix* species N59-24 from New Caledonia**

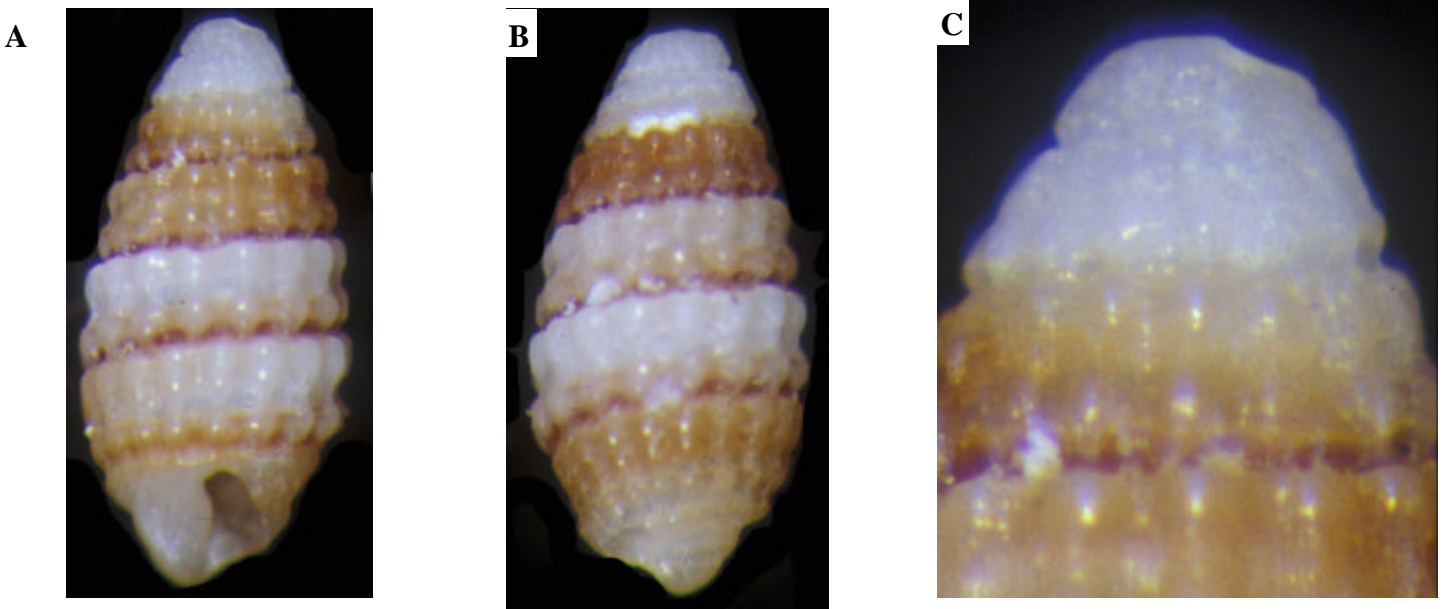
Family unknown



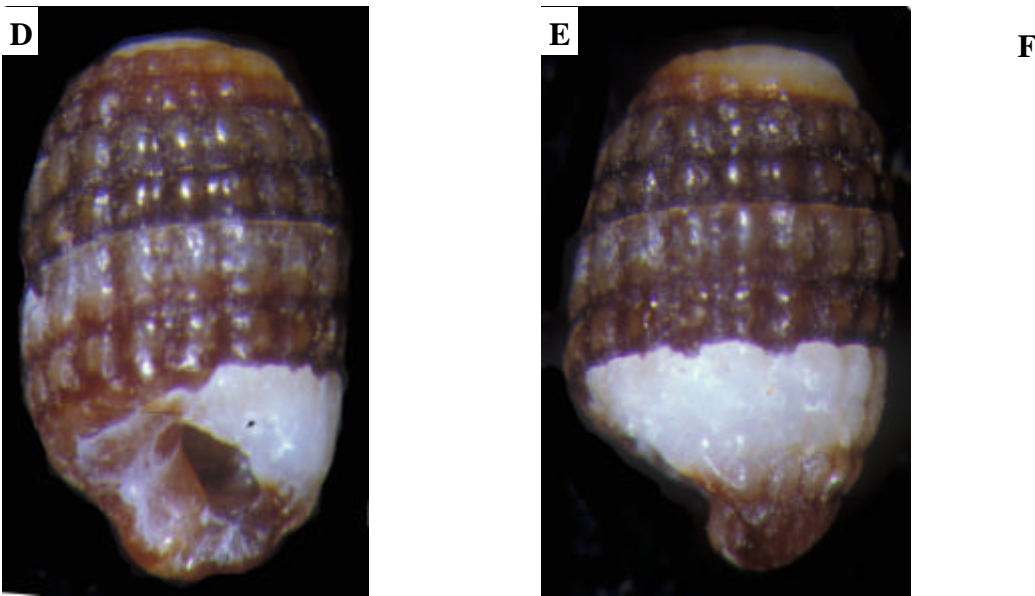
***Horalogica minareta* CH523 2.6mm from Oahu.**



***Horalogica puchellum* Ch521 3.7 mm from Oahu.**



*Horalogica telegraphica* CH522 2.5 mm from Oahu.



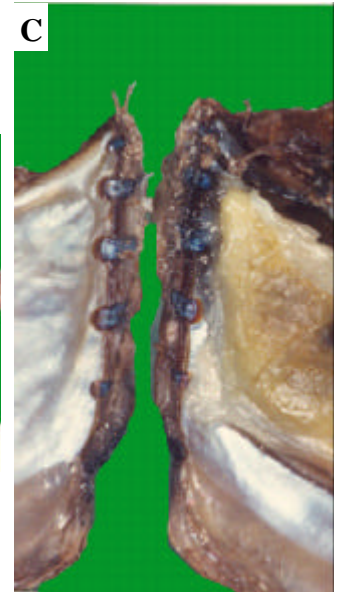
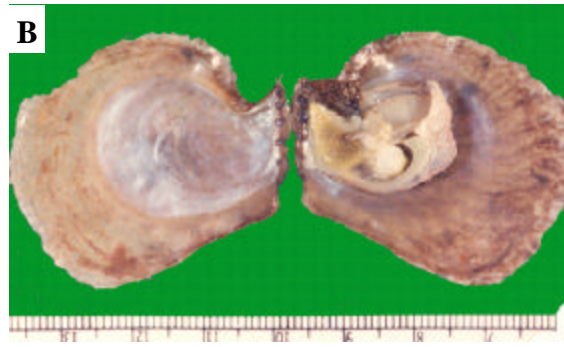
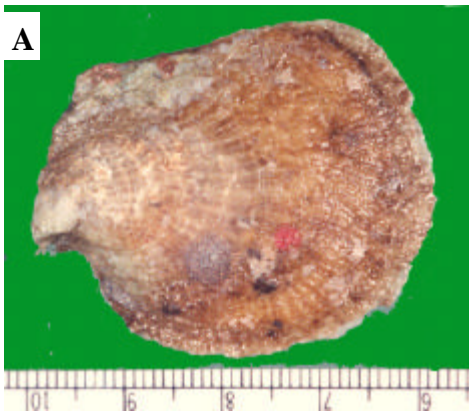
*Horalogica truncata* CG520 3 mm from Oahu.

Family unknown

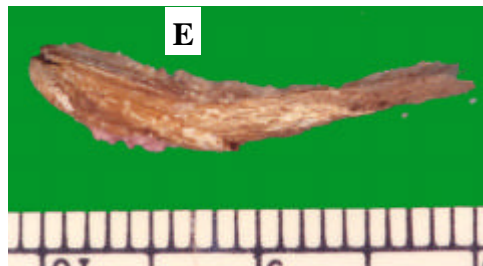


*Horologica truncata* CH520 3 mm from Oahu.

Isignomidae



Isignomidae: *Isignomen perme* Linnaeus, 1758 from Oahu



Isignomidae: *Isignomen legumen* N45-22 19.8 mm from Oahu



Janthinidae



**A**  
*Glaucus margarita*  
951006 from Oahu.



**B**  
*Janthina exigua* 951006 shell and eggs from Oahu



**D**  
*Janthina swainson globosa* from Oahu.



**E**  
This is the last page