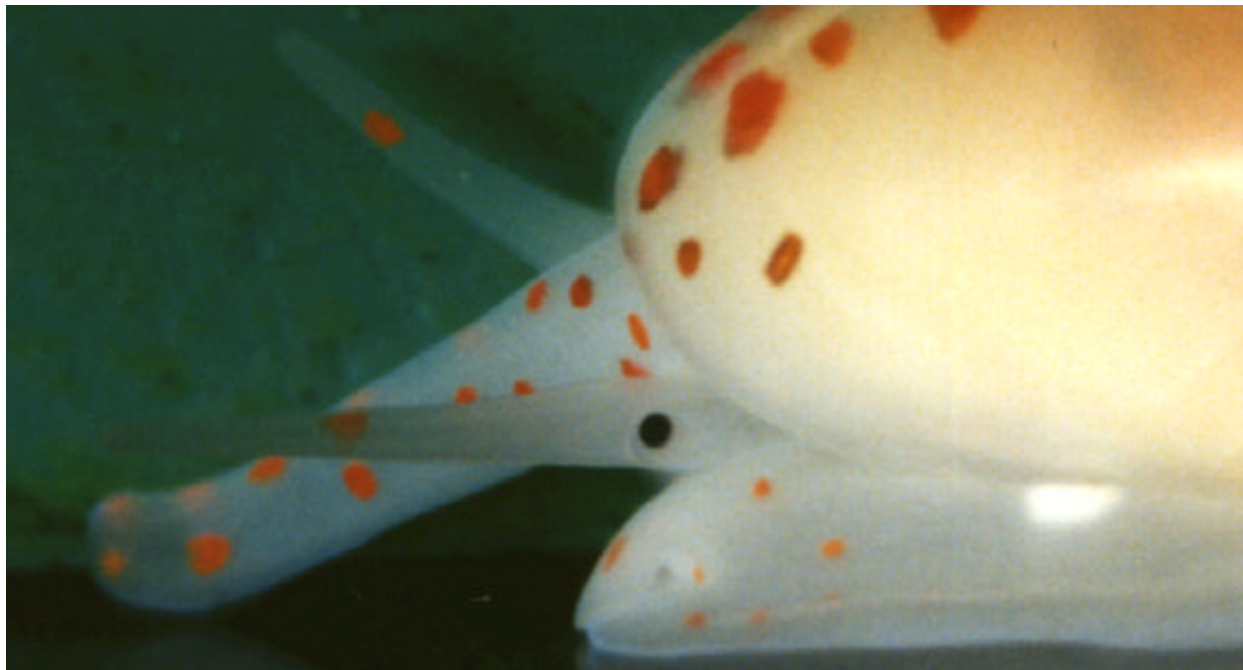




Internet Hawaiian Shell News

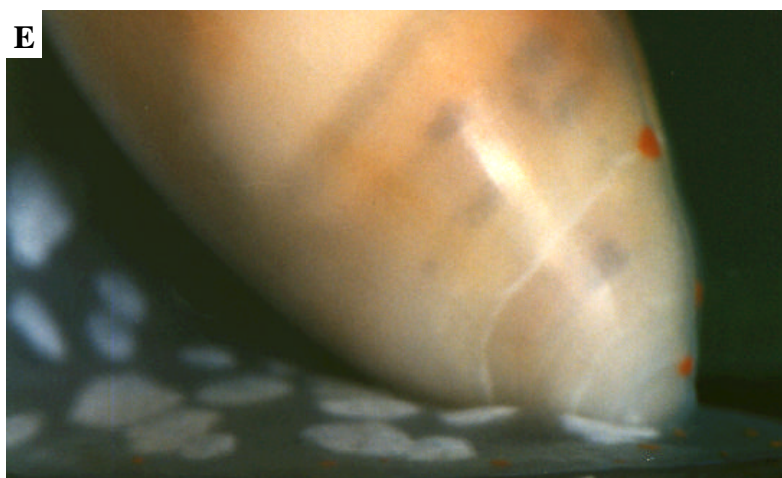
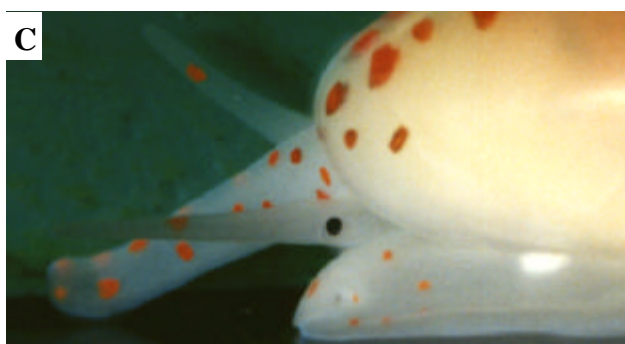
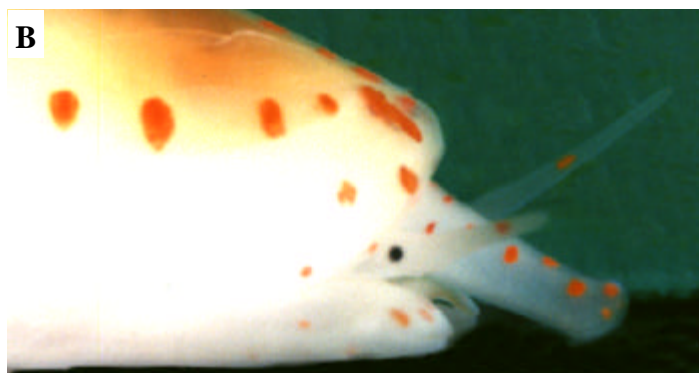
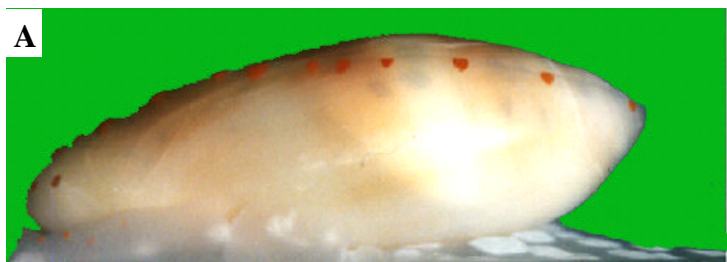
An Educational publication of the
Hawaiian Malacological Society

March, 2011 Feature 6C



[Next page](#) [Prior page](#) [First page](#) [Last page](#)

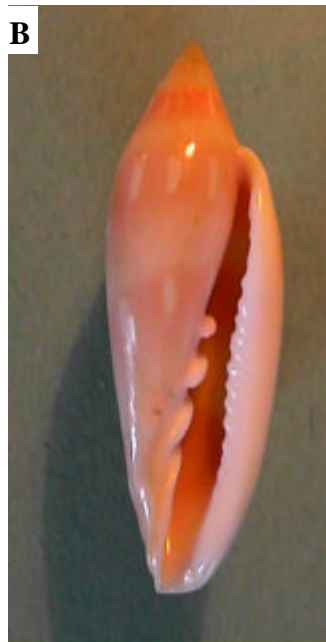
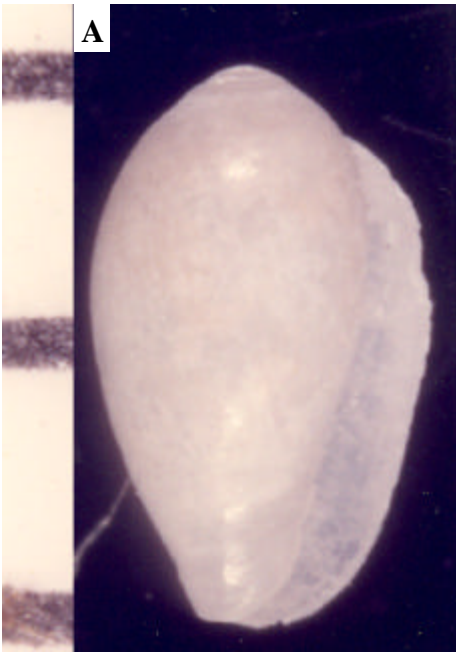
Marginellidae



**Marginellidae: *Hyalina philippinarum* B05-25 16.2 mm
from Bohol, Philippines**

[Next page](#) [Prior page](#) [First page](#) [Last page](#)

Marginellidae:



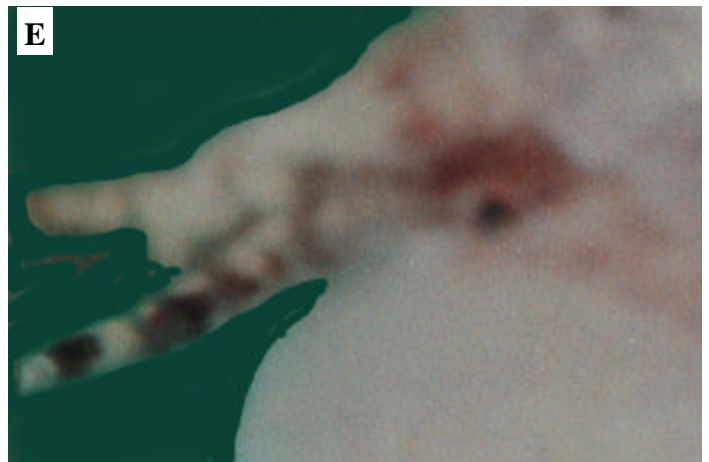
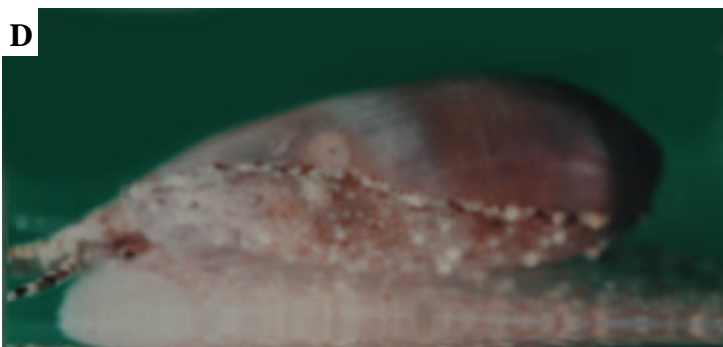
Marginellidae: Fig. A is *Marginella amygdala* specimen X027R-8 from Africa, by unknown photographer. Figs. B & C is *Marginella desjardini* 9-97 by trade unknown source. Fig. D is *Marginella hayes* Bozetti, 1973. Fig. E is *Marginella lussi* Hayes & Millard, 1995 photo received from Hayes.

[Next page](#) [Prior page](#) [First page](#) [Last page](#)

Marginellidae



Marginellidae: *Marginella philippinarum* G44-8 7.2mm from Guam.



Marginellidae: *Marginella species* G20-02 from Guam.

[Next page](#) [Prior page](#) [First page](#) [Last page](#)

Modulidae

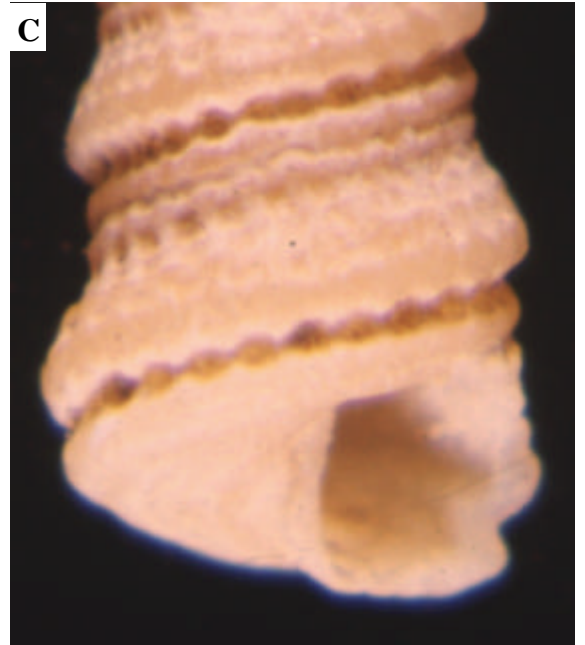


Marginellidae: *Marginella species* K13-11 15.2 mm from Kosrae.



Marginellidae: *Volvarina fusiformis* 416-21 from Oahu.

Modulidae



Family? *Mathhilda temonia* CH801 from Hawaii.

[Next page](#) [Prior page](#) [First page](#) [Last page](#)

Modulidae



Melampidae: *Melampus flavis* K41-29 29.9 mm from Kosrae.

[Next page](#) [Prior page](#) [First page](#) [Last page](#)

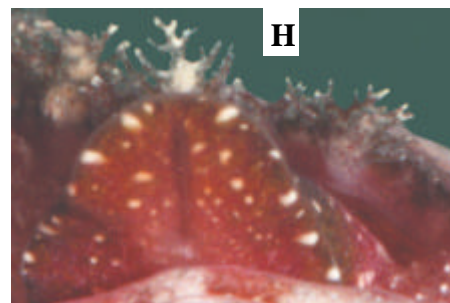
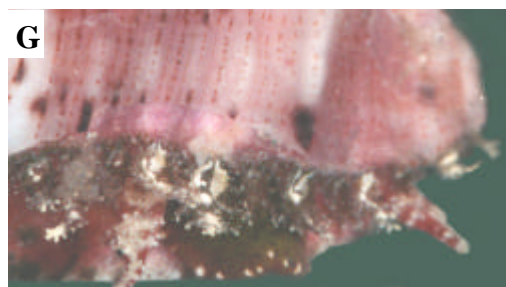
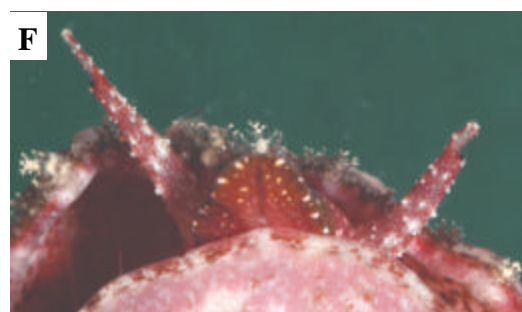
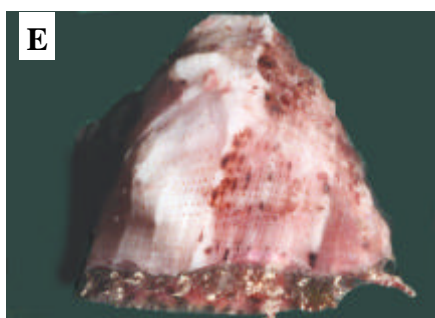
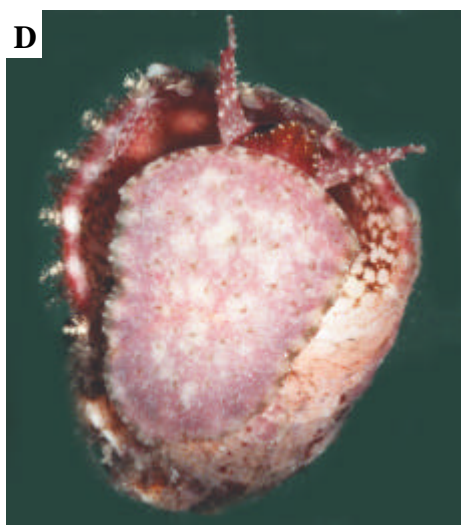
Modulidae



Melongendae: *Syrinx auranus* 436-29 from Oahu

[Next page](#) [Prior page](#) [First page](#) [Last page](#)

Modulidae



Modulidae: *Modulus tectum* 619-06 from Trudy Ermst. From Oahu

This is the last page

[Next page](#) [Prior page](#) [First page](#) [Last page](#)